

Combination Therapy for Sleep Apnea

with  **invisalign**® Treatment

Invisalign Aligners



The Upper Invisalign Tray is used in place of the Upper OASYS Cushion.



Upper Invisalign Aligner



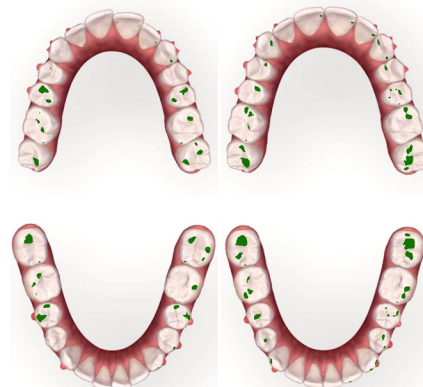
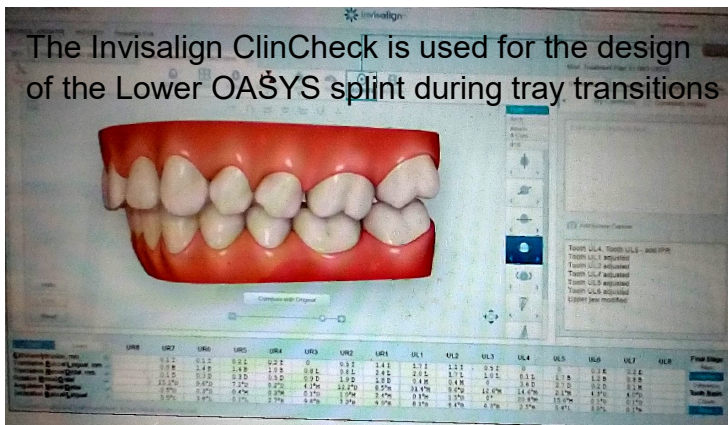
The Lower OASYS Splint is Designed to Function with Lower Tray Transitions.



660 Commerce Drive, Ste. C
Roseville, California 95678
(916) 865-4528

www.dreamsystemsdentallab.com

The Invisalign ClinCheck is used for the design of the Lower OASYS splint during tray transitions



- The **Invisalign ClinCheck** will be used to Evaluate the complexity of the Invisalign Treatment. For narrow and crowded dentition, it is recommended that the arch forms are developed and teeth better aligned before introducing Sleep Apnea Treatment.
- **For use of the OASYS during Invisalign Treatment**, it is beneficial to have access to the **Clincheck** so we can better prepare the casts for transitions, rotations, expansion, etc.. We will need access under the **doctor login, using a staff username and password**.
- **Impressions**
 - >Digital Impressions can be taken with the trays in place by wiping toothpaste on the underside of the trays for less reflection and a better scan.
 - >Standard PVS Impressions can be taken with the Invisalign Trays in Place
- >PVS or Digital Impressions can be taken using the previous set of trays
- **Protrusive Bite Record** should be taken with the trays in place for lab mounting
- The **Upper Invisalign Tray** will take the place of the Upper Oasys Splint Cushion
- The OASYS will be fabricated using a thermoflex resin, which when heated in microwave water for about three seconds to constrict or expand some with finger pressure and cooled in cold water.
- **Increasing Retention Around the Invisalign Trays During Treatment:** PVS or Bite material, Lynal® Tissue Conditioner or a Temporary Reline Material can be used around the trays, avoiding adhesion to the trays.
- The Trays will be changed per Treatment Protocol
- The Lower Buccal & Lingual of the Splint / Reline materials can be removed or trimmed, as needed. Dipping the Lower Splint in Hot Microwave water for about three seconds can allow you to squeeze the splint to tighten the fit, cooling in cold water.
- More PVS / Bite material, Lynal, or other Temporary Reline material can be added around the new lower tray as needed.
- **Finished Invisalign Treatment:** The OASYS Lower Splint will need to be relined to house the finished Invisalign Tray or to reline the Lower OASYS Splint to the new dentition alignment for continued Sleep Apnea Treatment.
- A Morning Bite Repositioner may be needed, but wearing the finished aligners regularly will help maintain the Invisalign-Treated alignment.
- **New Scans or impressions with a current Protrusive Bite** will be needed for relining and refitting the OASYS for ideal function. Some tooth movement and bite changes may occur without the Invisalign retainers in place.

OASYS Design Option

- **OASYS Simplicity**
No Nasal Dilators or Tongue Lifters
- Include **Nasal Dilators** for Improved Nasal Breathing
- Include **Tongue Lifters** for Tongue Repositioning

